

southco

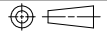
PROPRIETARY ITEM - EXCEPT FOR USES EXPRESSLY GRANTED IN WRITING INFORMATION DISCLOSED HEREON IS CONFIDENTIAL AND ALL RIGHTS PATENT AND OTHERWISE ARE RESERVED BY SOUTHCO, INC.

D4 QUARTER TURN STUDS

DATE	DRAWN	CHKD	SCALE	DRAWING NUMBER
01FEB2006	MDY	KLC	2:1	J-D4-J4

REV	DATE	DRAWN/CHKD	DESCRIPTION
A	02NOV2006	MJS/JSS	PRN: P2006-1533
B	05FEB2007	MJS/SM	PRN: P2007-0218
C	01MAR2013	CMS/BGL	PRN: P2013-0489

INCHES
ALL DIMENSIONS WITHOUT TOLERANCES ARE FOR REFERENCE ONLY.



B
PAPER SIZE

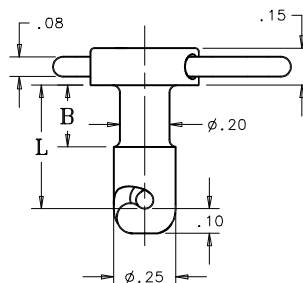
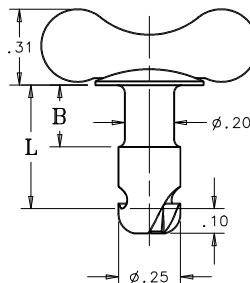
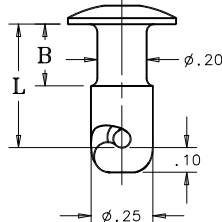
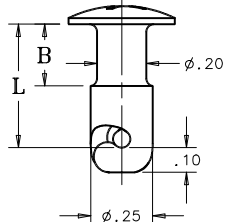
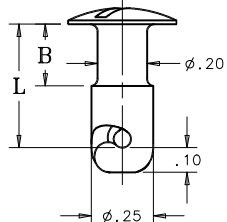
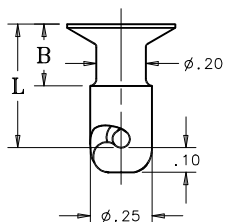
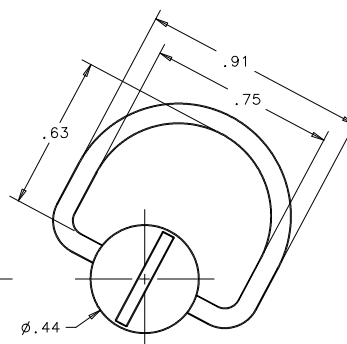
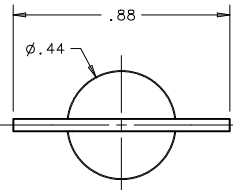
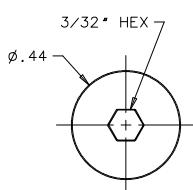
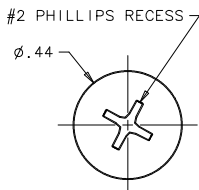
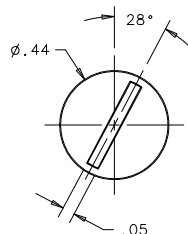
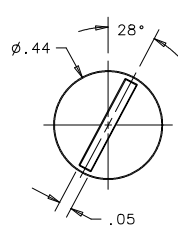
PART NUMBER:
D4-XX 4-YY ZZ

HEAD STYLE

MATERIAL & FINISH

FJ: FLUSH, SLOTTED
AJ: OVAL, SLOTTED
APRJ: PHILLIPS RECESS
ASHJ: HEX RECESS
AJW: WING
BJR: D-RING

NO SUFFIX: CASE HARDENED STEEL, ZINC PLATE CHROMATE DIP
SS: 17-4ph STAINLESS STEEL, HEAT TREATED, PASSIVATED



FLUSH SLOTTED

FJ

OVAL SLOTTED

AJ

PHILLIPS RECESS

APRJ

HEX RECESS

ASHJ

WING

AJW

D-RING

BJR

YY STUD DASH No.	ALL STYLES EXCEPT FLUSH		FLUSH STYLE ONLY	
	B	L	B	L
25	.075	.250	-	-
30	.100	.300	-	-
35	.150	.350	.175	.350
40	.200	.400	.200	.400
45	.225	.450	.225	.450
50	.250	.500	.250	.500
55	.275	.550	.275	.550
60	.300	.600	.300	.600
65	.350	.650	.350	.650
70	.350	.700	.350	.700
75	.400	.750	.400	.750
80	.400	.800	.400	.800
85	.500	.850	.500	.850
90	.500	.900	.500	.900
95	.600	.950	.600	.950
100	.600	1.000	.600	1.000
105	.600	1.050	.600	1.050
110	.600	1.100	.600	1.100
115	.600	1.150	.600	1.150
120	.600	1.200	.600	1.200