



PROPRIETARY ITEM - EXCEPT FOR USES EXPRESSLY GRANTED IN WRITING INFORMATION DISCLOSED HEREON IS CONFIDENTIAL AND ALL RIGHTS PATENT AND OTHERWISE ARE RESERVED BY SOUTHCO, INC.

SOUTHCO NO. 85 SEALED SINGLE HOLE RECEPTACLE

DATE	DRAWN	CHKD	SCALE	DRAWING NUMBER
15SEP83	RHB		2:1	J-85-35-311-55

REV	DATE	DRAWN/CHKD	DESCRIPTION	ITEM	PART NUMBER	MATERIAL	FINISH
G	11AUG2004	MDY/RLR	PRN: P2004-0902	ASSEMBLY	85-35-311-55	-	-
H	07APR2005	BRP/RLR	PRN: P2005-0589	RECEPTACLE	-	CASE HARDENED STEEL	ZINC PLATED, CHROMATE PLUS SEALER
I	21APR2008	ACH/MJS	PRN: P2008-0442	SHELL	-	CASE HARDENED STEEL	ZINC PLATED, CHROMATE PLUS SEALER
J	19MAY2014	CMS/JCG	PRN: P2014-0973	SPRING	-	STAINLESS STEEL	ZINC FLAKE COATING
				CAP	-	STAINLESS STEEL	NATURAL

INCHES

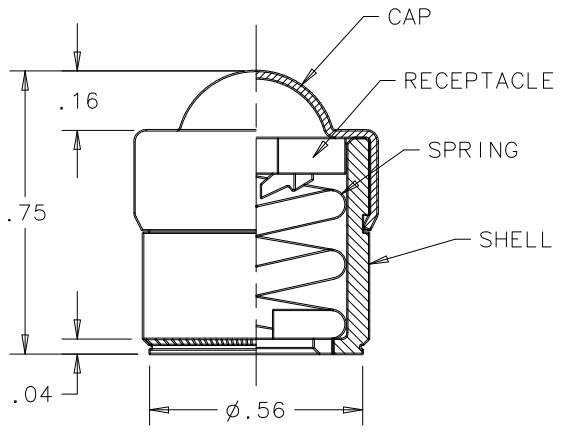
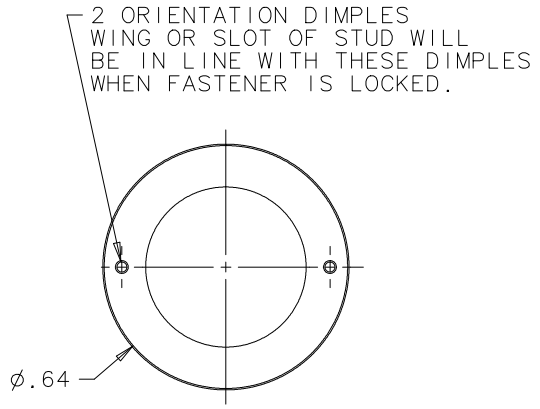
ALL DIMENSIONS WITHOUT TOLERANCES ARE FOR REFERENCE ONLY.

THIRD ANGLE PROJECTION A PAPER SIZE

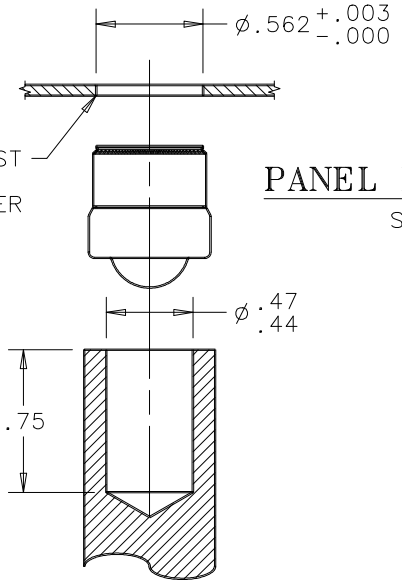
INSTALLATION INSTRUCTIONS:

1. DRILL OR PUNCH $\phi .562$ HOLE IN INNER PANEL.
2. PRESS RECEPTACLE INTO HOLE TO A HEIGHT OF $.554$ AT THE SHOULDER USING A TOOL WITH A CLEARANCE HOLE AS SHOWN OR SOUTHCO TOOL PART NUMBER 90-2825-11 MAY BE USED.

IF IT IS NECESSARY TO PRESS THE RECEPTACLE DEEPER TO ASSURE PROPER RETENTION IN THE PANEL, THE DIFFERENCE BETWEEN $.554$ AND THE ACTUAL HEIGHT AFTER INSTALLATION SHOULD BE DEDUCTED FROM YOUR TOTAL MATERIAL THICKNESS FOR PURPOSES OF STUD GRIP SELECTION.



THIS EDGE MUST BE SHARP DO NOT CHAMFER



PANEL PREPARATION

SCALE 1:1

